

YEAR 2023

CORE STATION 1028

ROAD NETWORK MAJOR

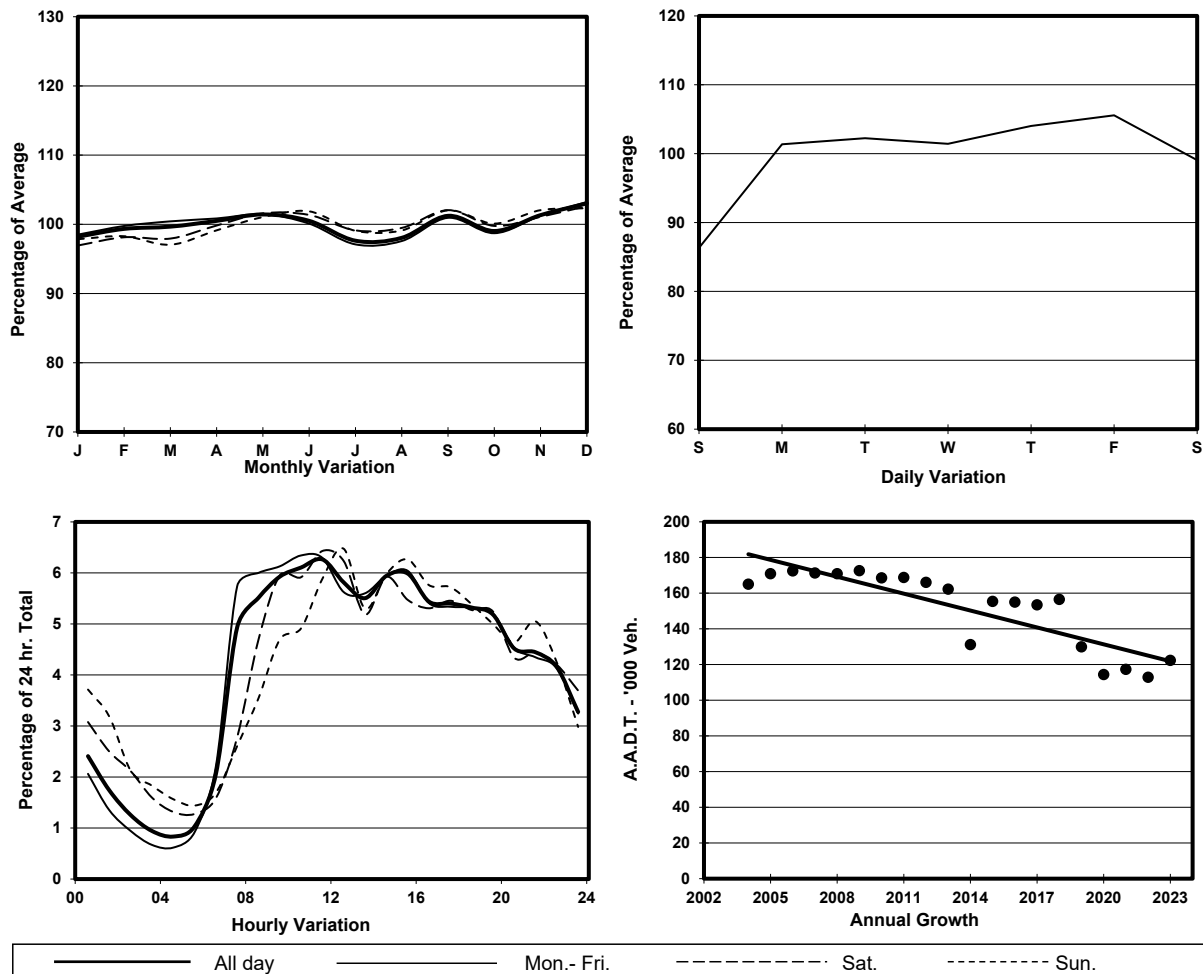
ROAD TYPE URBAN TRUNK ROAD

LINK GLOUCESTER RD (from ARSENAL ST to CROSS HARBOUR TUNNEL S. INT)

6.5m 15.8m 2.8m 19m 5.3m

E bound 5 lanes W bound 5 lanes

## 1. TRAFFIC FLOW VARIATION AND GROWTH



## 2. TRAFFIC CHARACTERISTICS (BY DIRECTION)

Parameter	All - Day	Mon. - Fri.	Sat.	Sun.
<b>EAST BOUND</b>				
A.A.D.T.	56730	59430	55540	47520
R 12 / 24 - %	68.8	70.5	65.1	62.5
R 16 / 24 - %	87.2	89	82.9	80.5
AM Peak Hour	0900-1000	0900-1000	0900-1000	0900-1000
One-way flow at AM peak hour	3440	3840	3060	2000
T - % (AM)	-	-	-	-
PM Peak Hour	1600-1700	1600-1700	1600-1700	1800-1900
One-way flow at PM peak hour	3220	3370	3110	2810
T - % (PM)	-	-	-	-
Prop.of commercial vehicles - 16 hr.	-	-	-	-
<b>WEST BOUND</b>				
A.A.D.T.	65590	67460	66640	58850
R 12 / 24 - %	67.6	69.1	64.2	62.6
R 16 / 24 - %	85.8	87.1	82.8	82.2
AM Peak Hour	0900-1000	0700-0800	0900-1000	0900-1000
One-way flow at AM peak hour	3810	4560	4210	3000
T - % (AM)	-	-	-	-
PM Peak Hour	1700-1800	1700-1800	1700-1800	1600-1700
One-way flow at PM peak hour	3510	3580	3560	3330
T - % (PM)	-	-	-	-
Prop.of commercial vehicles - 16 hr.	-	-	-	-

## 3. OTHER INFORMATION AND COMMENT